

# MT BACHELOR, a UNIQUE MOUNTAIN RESORT in MANY WAYS

BEND, OR – Just 20 miles west of Bend, Ore., sits Mt. Bachelor, a stunning, dormant volcano with unique, diverse terrain accessed by 11 chairlifts (eight high speed quads). With over 4,300 acres of lift-accessible terrain, you will not want to pass up a trip to the ski resort with the highest skiable elevation in Oregon and Washington. Located on the eastern flanks of Oregon's Central Cascades, Mt. Bachelor is known for its light, dry snow, diverse terrain, long seasons and access for families.

With over 462 inches of light, dry snow falling on Mt. Bachelor every year, the winter season typically thrives deep into May. Mt. Bachelor caters to all ability levels with terrain ranging from gently sloping groomers to steep, ungroomed tree skiing.

From the 9,000-foot summit, guests can ski or ride any direction with 360 degrees of powder-filled options. Surrounded by the tall hemlocks and pines of the Deschutes National Forest and breathtaking views of the Three Sisters and other Cascade peaks, the experience at Mt. Bachelor is unlike any other.

Cloudchaser, added in 2016, provides greater protection from the elements during storm cycles and added 635 acres of terrain that offers everything from beginner trails to playful gullies and powder fields for the more fearless.

For cruisers, Mt. Bachelor's excellent grooming team comes out every night to lay down seamless corduroy across all ability levels of trails. Terrain park enthusiasts can jump and jib in five designated parks and endless natural features across the mountain.

Amenities at the resort include Gravity Sports, a large specialty retail shop, lesson services, rentals, demos, dining and events. Other on-snow activities include Iditarod sled dog rides, snow tubing and free snowshoe tours in addition to a cross-country facility with up to 56 kilometers of trails and the longest groomed Nordic season in North America.

Mt. Bachelor's close proximity to Bend and Sunriver make lodging options, nightlife and other outdoor pursuits easily accessible. Lodging choices include everything from luxury resorts to hotels, condos and houses. Central Oregon is also known as "Beervana," with an iconic craft brewery scene and endless après ski options.

Getting to Mt. Bachelor and Central Oregon has never been easier. Roberts Field – Redmond Municipal Airport (RDM) is just 20 minutes away from Bend and is served by Alaska, American, Delta and United with nonstop flights from Seattle, Portland, San Francisco, Los Angeles, Salt

## Tetherow Resort in Bend Voted No. 1 Resort in Oregon by Condé Nast Traveler's 2018 Readers' Choice Award

BEND, OR – Condé Nast Traveler announced the results of its 31st annual Readers' Choice Awards with Tetherow Resort recognized as the best resort in Central Oregon and the third Best Resort in the Pacific Northwest.

"We are absolutely thrilled to be acknowledged by the readers of Condé Nast Traveler," said Chris van der Velde, general manager at Tetherow. "What an honor it is for Tetherow to be recognized by such an esteemed publication."

Nearly half a million Condé Nast Traveler readers submitted a record-breaking number of responses rating their travel experiences to provide a full snapshot of where and how we travel today.

Central Oregon's premier resort, Tetherow, just minutes from Mt. Bachelor and countless other outdoor adventures, is known for its sweeping views and award-winning golf course. Tetherow Resort offers guests a year-round luxurious and relaxing escape.

The Condé Nast Traveler Readers' Choice Awards are the longest-running and most prestigious recognition of excellence in the travel industry and are commonly known as "the best of the best of travel."

### About Tetherow Resort

Boasting magnificent views of the Cascade Range, Tetherow Resort in Bend, Ore., is just minutes from Mt. Bachelor and countless outdoor adventures. Tetherow encompasses 700 acres on the desirable west side of Bend. You will find 50 boutique hotel rooms at The Lodges, 22 vacation rental homes, an event pavilion and a state-of-the-art fitness facility, Tetherow Sport. It also has a year-round outdoor pool. There is also Solomon's restaurant and The Row pub. Tetherow is an ideal location for weddings, reunions or meetings.

Tetherow is located at 61240 Skyline Ranch Road, Bend, OR. It is conveniently found between the town of Bend and the ski area off Cascade Lakes Scenic Byway, the road to Mt. Bachelor.

Please call them at 1-844-431-9701, or visit their website for specific winter or summer activities at: <https://tetherow.com>

Lake City, Phoenix and Denver. The airport is so close to Mt. Bachelor that you can fly and ski or snowboard on the same day.

### What's New for Winter 2019

This year, Mt. Bachelor is celebrating their 60th year on

the slopes. Founded in 1958 by Bill Healy and a group of local, passionate investors, Mt. Bachelor instantly became a local favorite and has since grown to one of the best destinations in the Northwest. A grand opening was held on December 19 that year, which is a date that Mt. Bachelor will honor again this December as they celebrate 60 years of making memories on their beloved mountain.

Those who are interested in joining Mt. Bachelor for their 60th year have plenty of multi-day pass options. Save time and money by pre-purchasing Mt. Bachelor lift tickets, equipment rentals and other services online.

Please call Central Reservations at 1-800-609-1472 or visit: [www.mtbachelor.com](http://www.mtbachelor.com) to plan your vacation.

### Summer at Mt. Bachelor

Mt. Bachelor finishes one of the longest winter seasons in the world with a "Springtacular" celebration during Memorial Day weekend that includes pond skimming and a beer festival.

Then, after the snow melts, the downhill bike park becomes Mt. Bachelor's main attraction. Passionate mountain bikers and thrill seekers can test their ability and push their limits during an adrenaline-pumping ride down the mountain. Each year, the mountain has continued to develop the trails to offer more and more options for everyone from beginners to adrenaline seekers.

For a more relaxing experience, take a scenic chairlift ride to the mid-mountain Pine Marten Lodge and enjoy an elegant Sunset Dinner featuring gourmet Northwest cuisine and spectacular twilight views. Daytime options include lunch at Oregon's highest-elevation restaurant, disc golf and scenic lift rides.

### More Information

Save time and money by pre-purchasing Mt. Bachelor lift tickets, equipment rentals and other services online.

Mt. Bachelor's 2018-19 ski season began on Saturday, November 24 and is scheduled to conclude on Sunday, May 26, 2019, conditions permitting. They once again intend to offer one of the world's longest ski/snowboard seasons.

At SKIER NEWS' press time on January 14, 2019, Mt. Bachelor had received 155 inches of snowfall since October 1, and were reporting a base depth of 66 inches.

View, read and share this page online and you can link from it also, at: [www.skiernews.net/Spring2019-News.pdf](http://www.skiernews.net/Spring2019-News.pdf)

Please call 1-800-829-2442 for more information, or visit them online at [www.mtbachelor.com](http://www.mtbachelor.com)

# CRESTED BUTTE LODGING GIVES MORE VALUE for LESS DOLLARS

CRESTED BUTTE, CO – Many people travel far and wide to discover the bounty of beauty that is Crested Butte in every season. With so many things to do in Crested Butte and even more places to stay, choosing might be the hardest part. From rustic retreats to hot tub havens, Crested Butte Lodging is there to help you sort through the variety of options and find just the right experience for your trip. Five lodging options were presented in SKIER NEWS Oct-Nov edition and five more in the Dec-Jan edition.

You can find a complete description of the first five lodging choices at: [www.skiernews.net/Oct2018-News.pdf](http://www.skiernews.net/Oct2018-News.pdf) and the second five choices at [www.skiernews.net/Jan2019.pdf](http://www.skiernews.net/Jan2019.pdf)

Below is combination of five of the ten choices presented in the last two editions for you to review and choose.

### Ski-in/Ski-Out at Axtel Condominiums

Living up to the definition of ski-in/ski-out, Axtel Condos are conveniently located in Village Center and sit at the base of the Silver Queen lift, a high-speed chairlift that rises to the longest runs resort-wide. Each one- to three-bedroom unit comes furnished with a wood-burning fireplace, private balcony, kitchen and a common area to store your skis and gear. After a full day on the slopes, grab a cold one from the Avalanche Bar and Grill, the Avy as locals know it, and finish up with a dip in Axtel's outdoor hot tub.

### Chateaux, a Year-Round Party

With a 1,100-square-foot clubhouse ready to host large meetings, get-togethers and dinners, Chateaux makes family or group travel an absolute breeze. Winter visitors enjoy splashing around in the heated outdoor pool and hot tub, even as the flakes fall. In addition, summer mountain bikers can rinse off their wheels at the complimentary bike wash station on-site. Condos range from one to four bedrooms (the largest of any on this list) and are furnished with a wood-burning fireplace, private deck and full kitchen.

### Columbine:

#### Great Views Atop Mt. CB

Warning: This property is not for the faint-hearted. Perched higher on the mountain than any other resort on this list, Columbine boasts commanding views of the town and valley, and unrivaled slopeside access to skiing, hiking and biking trails. Condos vary in size and range from one to three bedrooms; some even include a charming loft with additional beds. Each unit features a wood-burning fireplace and full kitchen, while each rental includes access to the

shared sauna, steam room, gas grill and outdoor hot tub, perfect for clear-night soaks watching the lights of historic Crested Butte sparkle and compete with the shimmer of an endless diamond sky.

### Snowcrest Trifecta: Unbeatable Views, Location and Price

Yes, nearly all of the properties on this list include some fashion of a bubbling bath complete with some sort of outlook, but few properties can hold a candle to Snowcrest's outdoor deck and hot tub. Boasting one of the best Crested Butte Wildflower Festival vantages in summer due to its slightly elevated and central locale, this property feels like it's off the beaten path when, in fact, it's right in the heart of it all.

Accessible via the private pedestrian footbridge, guests are just steps away from two express chairlifts, charming shops and gourmet restaurants. Inside, each unit features a circular freestanding fireplace (think rustic mountain chalet), as well as a private balcony and full kitchen at surprisingly affordable rates.

### Panoramas Aplenty at Wood Creek Lodge

Blooming wildflowers in the summer, rich red and gold foliage in fall and snow-capped summits in the win-

ter, Crested Butte's bounty of beauty is visible round-the-clock to guests of Wood Creek Lodge. Offering modern amenities and a private balcony to marvel at the mighty view, each unit also comes equipped with a full kitchen and wood-burning fireplace. In true Colorado fashion, spend some time roasting marshmallows by the new fire pit or take a dip in the open-air hot tub. The WestWall and Peachtree lifts are just 50 yards out.

### Want to Read More?

Please view the page with their first five lodging options at: [www.skiernews.net/Oct2018-News.pdf](http://www.skiernews.net/Oct2018-News.pdf)

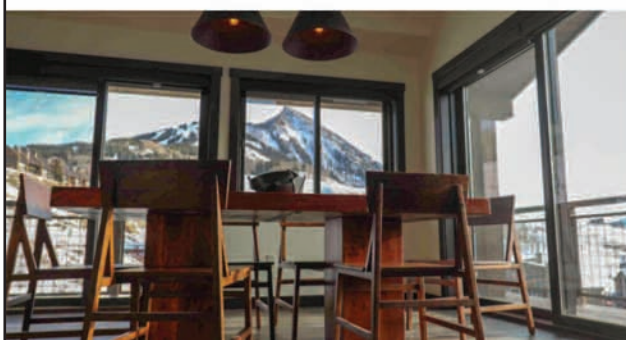
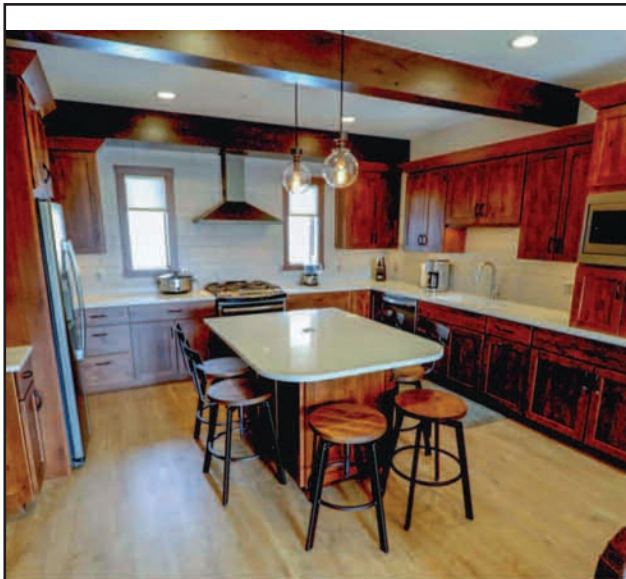
You can also view their second five lodging options at: [www.skiernews.net/Jan2019-News.pdf](http://www.skiernews.net/Jan2019-News.pdf)

### Still Want More?

View, read and share this page online and you can link from it also, at: [www.skiernews.net/Spring2019-News.pdf](http://www.skiernews.net/Spring2019-News.pdf)

They have more places for you to stay in Crested Butte in any season. Please check out all their lodging options on their great website at: [www.CrestedButteLodging.com](http://www.CrestedButteLodging.com)

Or plan to save on your Colorado ski vacation by calling Crested Butte Lodging at 1-888-620-7669 (SNOW).



**25% OFF CRESTED BUTTE CONDO RENTALS FOR WINTER 2018/19**  
\*some restrictions apply



**CRESTED BUTTE LODGING & PROPERTY MANAGEMENT**

1-888-620-7669

[www.crestedbuttelodging.com](http://www.crestedbuttelodging.com)