

GRANLIBAKKEN'S SECLUDED LOCATION OFFERS PRIVACY MINUTES from TAHOE SKIING

TAHOE CITY, CA — Granlibakken's secluded 74-acre valley has appealed to families since Tahoe Tavern brought guests to toboggan in the area in 1928. The Lodge's private location is near Tahoe City and Lake Tahoe and is close to all north shore ski resorts. The European hospitality was one of the many reasons that guests were drawn to the site. Today, families still visit Granlibakken for its unique setting while also enjoying value-priced packages.

Families looking for a budget-minded wintry getaway can take advantage of the Ski and Stay Package starting at \$109 per person. The package includes lodging at Granlibakken, daily hot buffet breakfast and one adult lift ticket to Squaw Valley USA, Northstar-at-Tahoe, Alpine Meadows, Homewood Mountain Resort, Sugar Bowl, Mt. Rose or Sierra-at-Tahoe. Alpine Meadows, Homewood and Squaw offer shuttles with direct pick-up and drop-off at Granlibakken. Starting Dec. 19 an evening shuttle takes guests to Tahoe City dining, Nevada Casinos and nightlife.

With lodging options from lodge rooms, studios and one- to eight-bedroom townhouses, Granlibakken's variety appeals to families of all sizes. Many units have kitchens, fireplaces and private decks. Although the resort is tucked away in its own valley, free wireless keeps connectivity with the outside world.

The resort's on-site amenities include a sauna, heated outdoor pool and hot tub. To unwind over a hearty meal, the Cedar House Pub is the spot in the main lodge. The pub serves dinner from 5-9 p.m. Fridays, Saturdays and weeknights during the holidays.

For a peaceful day without crowds, Granlibakken's Ski and Sledding Hill is within walking distance to families staying

at the lodge. Private and group lessons are offered three times a day. Granlibakken offers a Learn to Ski or Snowboard Package for beginners starting at \$49 and includes a lesson, lift ticket and equipment rental. The snow play area is open daily during the season and the ski hill is open on Friday through Sunday.

Granlibakken is not limited to downhill skiing and snowboarding, the resort has access to miles of ungroomed terrain through dense forests to cross-country ski or snowshoe. The on-site rental shop is open daily and offers skis, snowboards, snowshoes and cross country gear for all ages.

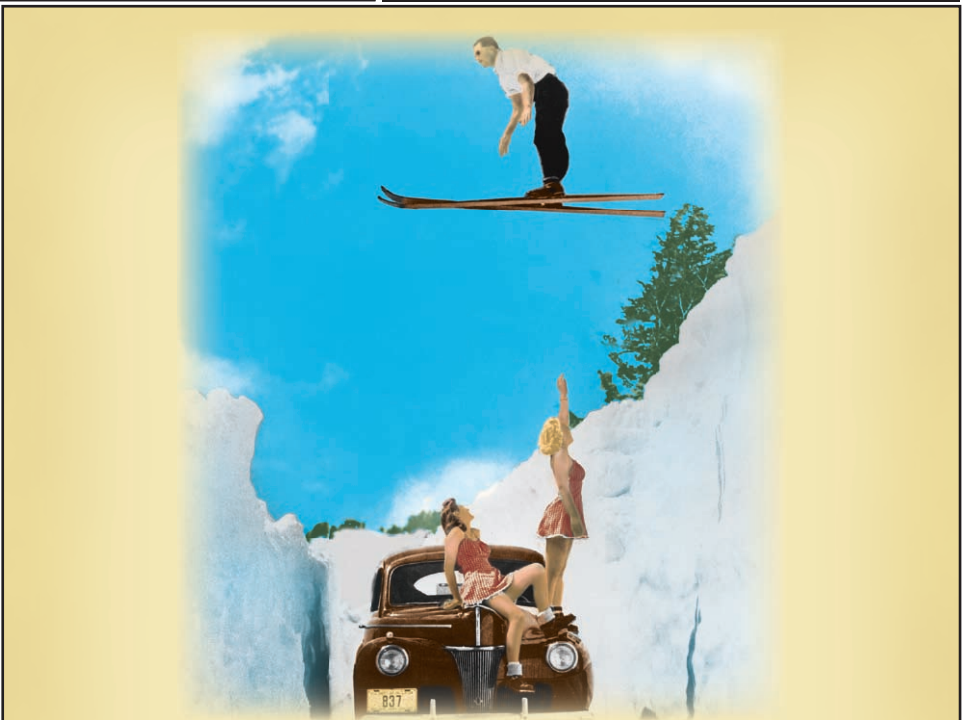
Ski and Stay packages are \$109 per person, per night, midweek (Sunday-Thursday) — and \$132 Friday-Saturday, and based on double occupancy. If guests choose not to ski or snowboard, a \$50 credit can be used at Lighthouse Spa or Tahoe Nordic Center.

In addition to its longtime family appeal, Granlibakken has found a niche with conference and meeting space for groups of four to 400. Granlibakken features more than 16,000 square feet of meeting space, 16 meeting rooms and 188 lodge rooms. Groups can meet and ski free this winter for \$186 per person. Packages include lodging, three meals daily, complimentary cocktails before dinner, standard audio/visual equipment, coffee breaks, high-speed Internet access and a lift ticket to any one of the above listed resorts.

Log on via an easily found link on the homepage of www.skiernews.com.

To book your Ski & Stay Package visit their website at www.granlibakken.com.

To book your stay or your family or group event, you may also contact the lodge by calling, toll free, 1-877-543-4764.



Lift Ticket, Lodging & Breakfast from \$109*

No wonder it's called Tahoe's Best Ski/Snowboard Package

Available exclusively at Granlibakken, this steal-of-a-deal package includes:

- ♦ One night of comfortable lodging
- ♦ Delicious, hot breakfast buffet
- ♦ On-site pool, hot tub, sauna, ski/sled/snow play hill and more
- ♦ One adult, midweek lift ticket to either Alpine Meadows, Homewood Mountain Resort, Mt. Rose, Northstar-at-Tahoe™, Sierra-at-Tahoe, Squaw Valley USA or Sugar Bowl

Got a group?

Inquire about our all-inclusive, \$186 Meet and Ski package*.

www.Granlibakken.com

For information or reservations visit

Granlibakken.com or call 877-543-4764.

GRANLIBAKKEN

CONFERENCE CENTER & LODGE

LAKE TAHOE

*Per person, per night, based on double occupancy. Valid midweek, weekend rates from \$132 per person, per night. Restrictions apply. Expires April 30, 2009.

WHAT'S NEW in SOUTH LAKE TAHOE (continued)

SOUTH LAKE TAHOE GEARS UP FOR SKI SEASON

Continued from page 5.

WHAT'S NEW ON THE SLOPES (continued)

Heavenly (continued)

Heavenly will double its indoor seating at East Peak Lodge, offer 100 percent Certified Organic Starbucks coffee and Fair-Trade espresso, and eliminate all artificial trans fats in its dining establishments. They expanded and remodeled the California Lodge's rental shop and installed a magic carpet surface lift at the California ski school. They also added six new, low-emission grooming machines to the country's largest fleet of Prinoth350 snow cats and expanded snow-making to cover Nevada's Stagecoach run. On the high-tech side, Heavenly season passes will include "easy scan" RF technology to expedite access to the lifts.

For more info, please log on to www.skiheavenly.com or call 1-800-432-8365.

Kirkwood Mountain Resort

Kirkwood Mountain Resort added two new lifts for the 2008-09 season to improve access to 700 acres and over 1,350 vertical feet of skiing and snowboarding in its legendary backside terrain. This is the first phase of its recently approved Mountain Master Development Plan.

The Lookout Vista lift replaces the hike to the famed chutes of Thunder Saddle along with access to the snowfields and cliffbands of Sunnyside. The Covered Wagon lift gains entry to the highest point crossed on the historic Mormon Emigrant Trail along with pristine powder stashes on Fawn Ridge.

The resort installed a beginner-friendly Wonder Carpet Lift at its Timber Creek Base Area replacing existing tows and lifts. Kirkwood revamped its three terrain park layouts for progression and flow. The resort invested in snowcat machinery specifically designed for terrain park applications. In addition to its terrain parks and half-pipe, Kirkwood is opening a Skier/Boarder X Course under Chair 5.

For more info, please log on to www.kirkwood.com or dial (209) 258-6000.

Sierra-at-Tahoe Resort

Sierra-at-Tahoe Resort's website is providing guests with a cutting-edge online experience with an interactive radar application of weather patterns over precise locations at Sierra Resort. It differentiates between summit and base settings. As storms approach the mountain crests, eager skiers and boarders can follow weather activity in real time. iPhone and other smartphone users can access the mobile web site for live feeds of daily conditions, weather, news and events.

Complementing the progress of last season's green initiatives with free preferred parking for hybrid vehicles, Sierra-at-Tahoe will further reduce green house gas emissions by

encouraging no-idling cars; implementing carpooling resources at SierraAtTahoe.com to help guests connect and share rides; and by purchasing only 100 percent compostable, disposable products for all restaurants. In fact, all plates, bowls, cups and flatware will be made from renewable sources such as sugar cane, potato starch and corn resin.

The 360° Smokehouse BBQ at the top of Grandview Express will cater to small, private groups up to 30-40 people this season providing incredible views of Lake Tahoe, and menu items such as pulled pork, tri-tip, brisket and fried green beans.

For more info, please visit www.SierraAtTahoe.com or call (530) 659-7453 or 1-877-754-2782.

ENTERTAINMENT WINTER LINE-UP

2009 marks the 50th anniversary of the South Shore Room at Harrah's Lake Tahoe. The site for legendary performers like Sinatra, Streisand, Denver, Bennett and Sammy continues rocking to start the winter season with Los Lonely Boys on Nov. 22; Abba, Nov. 29; and Air Supply, Dec. 6. For more Harrah's info and show updates please call 1-800-HARRAHS or www.TotalRewardsTahoe.com.

For the Horizon Casino Resort, call (775) 588-6211 or www.horizoncasino.com.

Throughout the winter, live music, local DJs, artists, entertainers, and inspiring karaoke singers can be found throughout South Shore at venues such as Divided Sky, Rockwater, Rojo's Tavern, Whiskey Dicks, Tudor Pub, Tahoe Underground and Valhalla Boathouse Theater.

For more info check out www.bluelaketahoe.com and www.tahoeculture.com.

LODGING PACKAGES

Casinos

At Harrah's and Harveys' Lake Tahoe, winter ski packages start at \$79 per night, including room and lift ticket, see www.TotalRewardsTahoe.com.

MontBleu Resort Casino & Spa winter ski packages start at \$199 per night, including room and two lift tickets to choice of local resorts, see www.montbleuresort.com.

The Ridge Tahoe

The Ridge Tahoe is located steps from Heavenly's Stagecoach Lodge on the Nevada side. It overlooks the Tahoe area and the Carson Valley. The Ridge Tahoe is celebrating its 25th anniversary with ski packages starting at \$199 per night, including deluxe room, two lift tickets, microzone facial and resort amenities: health club, indoor sports complex, Jacuzzis and shuttle service to the Stateline corridor.

For info, please log on to www.ridgetahoeresort.com or call 1-800-334-1600.

Embassy Suites Lake Tahoe Hotel & Ski Resort

Embassy Suites Lake Tahoe Hotel & Ski Resort is next door to the Heavenly Gondola as well as shops, entertainment and casinos. They now provide BusinessLink™ Centers with free Wi-Fi and high-speed Internet connection. There are on-site ski lift ticket sales, equipment rentals and complimentary ski check. They can also print boarding passes and flight check-in. There is a new menu at their world-class ECHO Restaurant and every guest gets a complimentary cooked-to-order breakfast and the very popular nightly manager's reception.

For more info, please log on to www.embassytahoe.com or call 1-800-988-9850.

Historic Camp Richardson Resort

Historic Camp Richardson Resort is an outdoor enthusiast's Mecca, with snowshoeing access to some of the most popular trails and beaches in South Shore. The resort's lake-side cabins sleep two to eight people, and feature gas fireplaces and basic kitchens, including microwave, coffeemaker and toaster. Their on-site restaurant, Beacon Bar & Grill, is a favorite among locals and is open year round. Heavenly is 10 minutes away and Sierra-at-Tahoe is 30 minutes away.

For more information, please log on to www.camprichardson.com or call 1-800-544-1801.

Lakeland Village Beach & Mountain Resort

Lakeland Village Beach & Mountain Resort, Tahoe's lake-side condominium resort can accommodate couples, families or groups with choices ranging from one to five bedrooms. This winter, bathroom and kitchen remodels, new carpets and furniture will be completed throughout its 16 different style unit configurations. There is a deluxe continental daily breakfast menu, private shuttle hours from 8 a.m. to midnight, an on-line booking system that makes it secure and easy to book your stay. Ski and ride packages and numerous special offers will be announced throughout the season.

For more info, log on to www.lakeland-village.com or call 1-800-822-5969.

Tahoe Lakeshore Lodge & Spa

Tahoe Lakeshore Lodge & Spa has a Girlfriend Getaway package that includes one-hour massages for each, bottle of wine, and a \$60 dinner voucher to nearby restaurant Blue Water Bistro. South Tahoe's only lakefront property, Lakeshore Lodge's amenities include a private beach, heated pool, on-site spa and a very convenient location.

For more information, please log on to www.tahoelakeshorelodge.com or call 1-800-448-4577.

FOR MORE INFO ABOUT TAHOE'S SOUTH SHORE

For information about South Lake Tahoe, please call the Lake Tahoe Visitors Authority at, 1-800-288-2463 or visit www.BlueLakeTahoe.com.